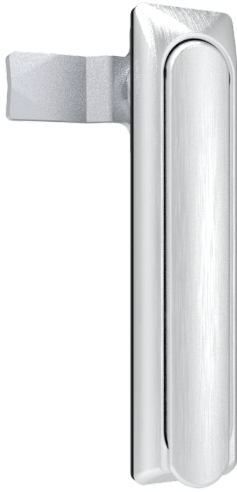


Swing handle lock

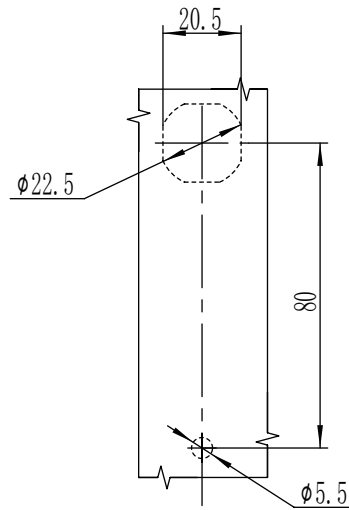
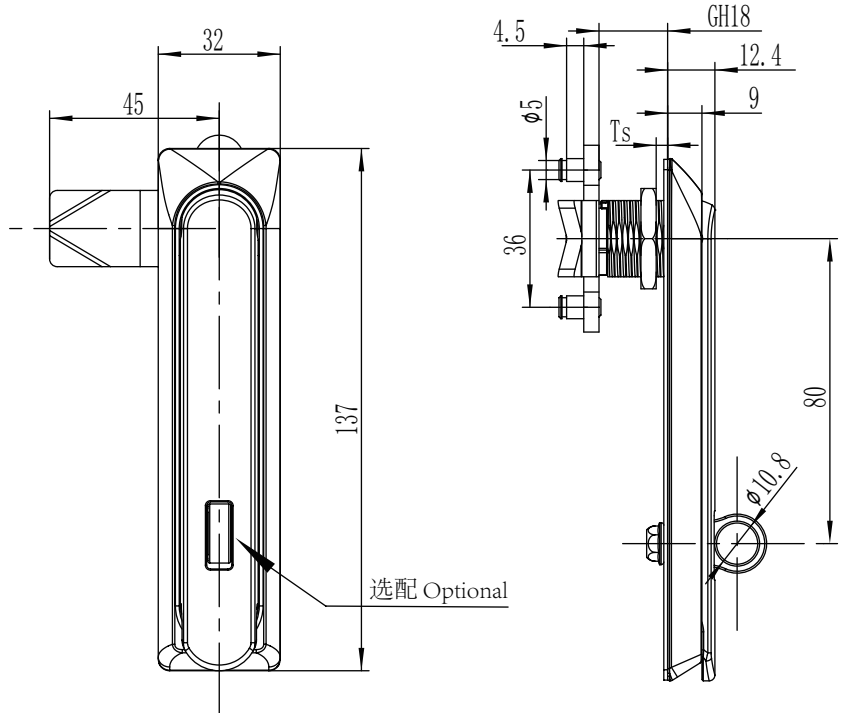
A-1107



RL

IP54

SERIES



开孔尺寸
Panel cut out

请 联 系 W W W . F O R N D . C O M
如 需 获 得 产 品 3 D 模 型 图

1. Material and surface treatment:
Lock body, handle: SUS304 or SUS316
Steel bolt: SUS304 or SUS316
Sealing ring: EPDM foam.

2. Performance parameters:
Protection class: IP54
Handle bearing tension value: ≤ 280N
Handle bearing torque value: ≤ 42N·m
Maximum static load: 300N

1. 材质及表面处理:
锁体, 手柄: SUS304 或 SUS316
螺栓: 铁镀锌或 SUS304 或 SUS316
密封圈: EPDM发泡胶。

2. 性能参数:
防护等级: IP54
手柄承载拉力值: ≤ 280N
手柄承载扭矩值: ≤ 42N.m
最大静载荷: 300N

不锈钢 Stainless steel	
带挂 Padlockable	不带挂 Without padlock
A-1107-10-A1	A-1107-20-A1