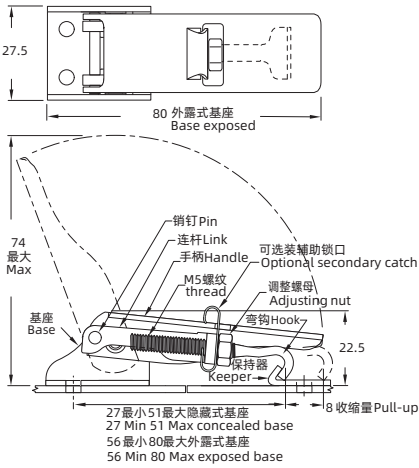
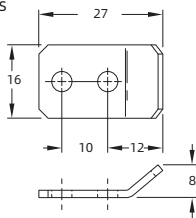


门锁 Latch

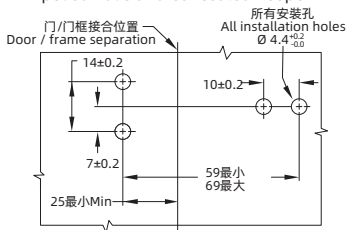
外露式基座 (显示辅助锁扣选项)
Exposed Base (Secondary catch option shown)



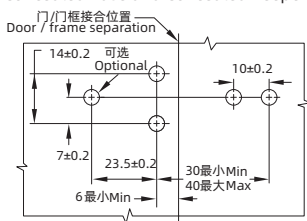
保持器 Keepers
隐藏式 Concealed



外露式基座和隐藏式保持器
Exposed Base and Concealed Keeper



隐藏式基座和隐藏式保持器
Concealed Base and Concealed Keeper



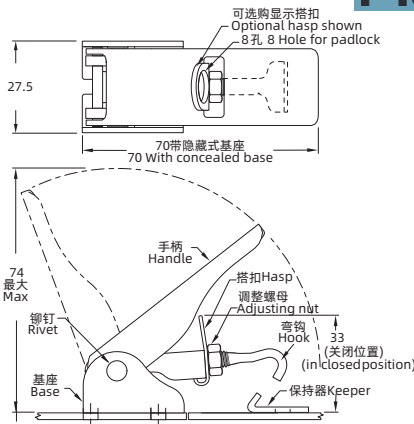
选型 Model selection

基座类型 Base type

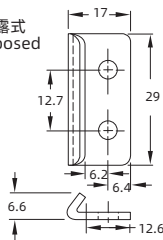
- 51 隐藏式
- 51 Hidden
- 52 隐藏式, 带辅助锁扣
- 52 Hidden with auxiliary latch
- 53 隐藏式, 带挂锁搭扣
- 53 Hidden with padlock strap
- 55 外露式
- 55 Exposed
- 56 外露式, 带辅助锁扣
- 56 Exposed type, with auxiliary lock
- 57 外露式, 带挂锁搭扣
- 57 Exposed type with padlock buckle

F-1645-B-10

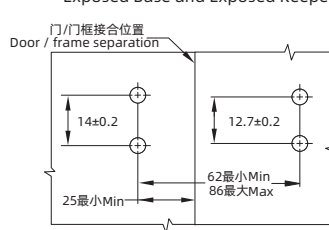
隐藏式基座 (搭扣如图)
Concealed Base (Hasp option shown)



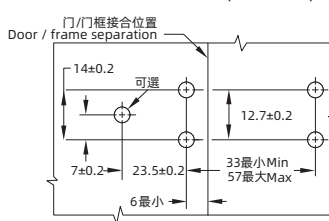
外露式 Exposed



外露式基座和外露式保持器
Exposed Base and Exposed Keeper



隐藏式基座和外露式保持器
Concealed Base and Exposed Keeper



- 10 代表钢镀锌
- 10 represents Steel galvanizing
- A1 代表 SUS304
- A1 represents SUS304
- 40 代表钢, 粉末涂层黑
- 40 represents Steel, powder coated black

表面处理	保持器零件号	
	隐藏式	外露式
钢镀锌 Galvanized iron	1645-600-10	1645-238-10
钢, 黑色粉末涂层 Steel, black powder coated	1645-600-40	1645-238-40
SUS304	1645-600-A1	1645-238-A1

F-1645 Draw Latch



1. Material and surface treatment:
Main body: SUS304 or Steel galvanizing or Steel, powder coated black

1. 材质及表面处理:
主体: SUS304 或 钢镀锌 或 钢, 粉末涂层黑