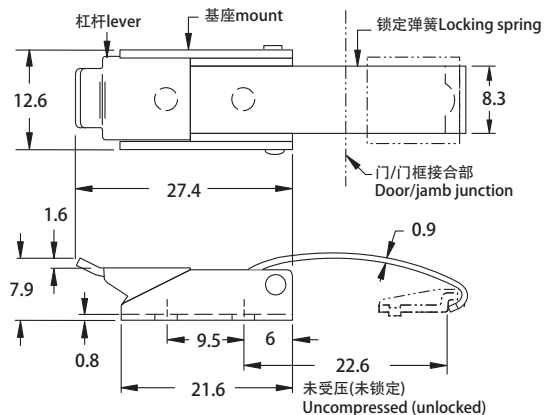
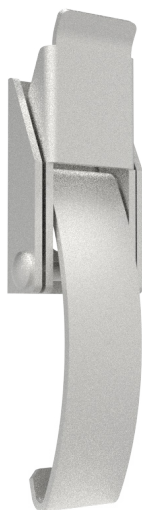


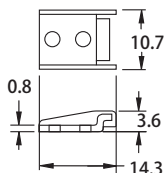
Draw Latch

F-1640

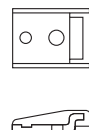


保持器 Retainer

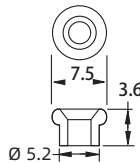
隐藏式双孔
Hidden double hole



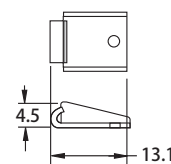
隐藏式单孔单突缘
Hidden single hole single flange



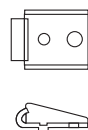
单孔挂钩式
Single hole hook type



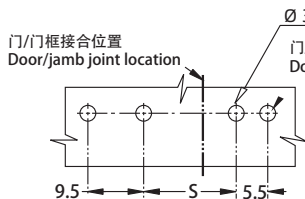
外露式单孔
Exposed single hole



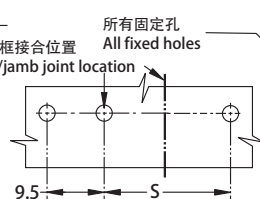
外露式单孔单突缘
Exposed type single hole single protruding edge



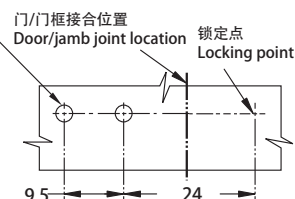
双孔保持器
Double hole retainer



单孔保持器
Single-hole retainer



只限门锁
Door lock only



如需获得产品3D模型图，请联系 WWW.FORND.COM

1. Material and surface treatment:
Main body: SUS304 or Steel galvanizing or Steel, powder coated black

1. 材质及表面处理:
主体: SUS304 或 钢镀锌 或 钢, 粉末涂层黑

材料 material	零件号 Part number					
	门锁 door lock	保持器 Holder				
		隐藏式双孔 Hidden double hole	隐藏式单孔单突缘 Hidden single hole single flange	单孔挂钩式 Single hole hook type	外露式单孔 Exposed single hole	外露式单孔单突缘 Exposed type single hole single protruding edge
钢镀锌 Steel galvanizing	F-1640-160-10	1640-103-10	1640-101-10	1640-105-10	1640-104-10	1640-102-10
不锈钢 SUS304	F-1640-160-A1	1640-103-A1	1640-101-A1	1640-105-A1	1640-104-A1	1640-102-A1
钢, 粉末涂层黑 Steel, powder coated black	F-1640-160-40	1640-103-40	1640-101-40	1640-105-40	1640-104-40	1640-102-40
尺寸 Size (S)		14.7	14.7	21.8	33	27.4