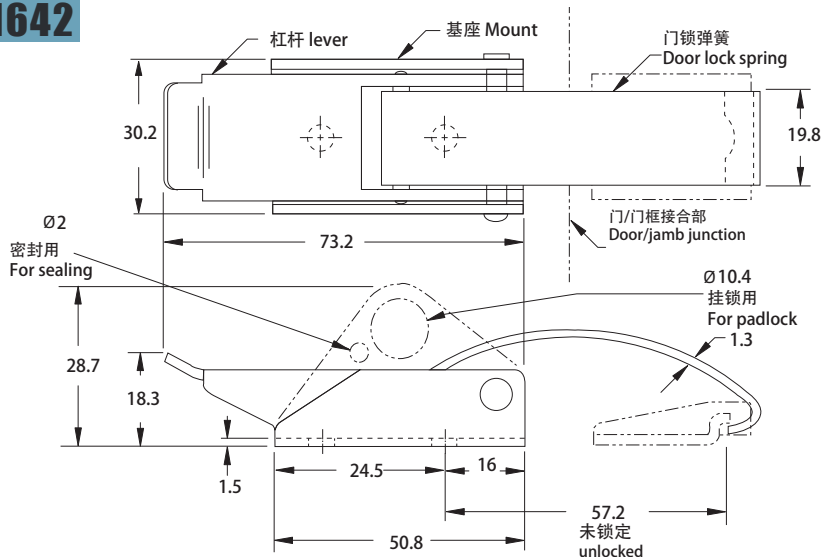
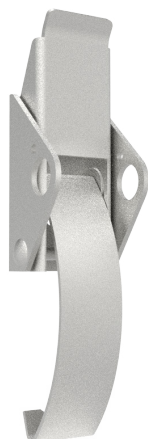
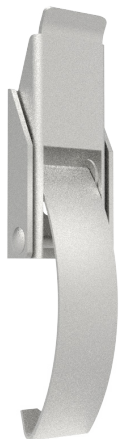


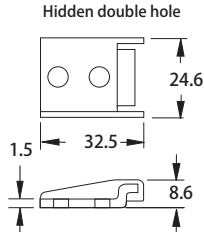
Draw Latch

**F-1642**

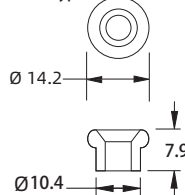


保持器 Retainer

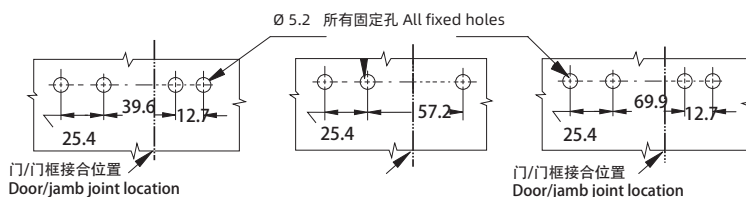
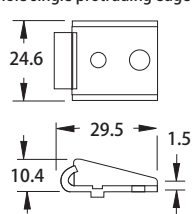
隐藏式双孔 Hidden double hole



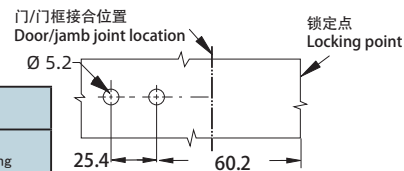
单孔挂钩式 Single hole hook type



外露式单孔单突缘 Exposed type single hole single protruding edge



只限门锁 Door lock only



材料 material	门锁零件号 Part number door lock	
	杠杆手柄向上 Lever handle up	挂锁锁定 Padlock locking
钢镀锌 Steel galvanizing	F-1642-120-10	F-1642-320-10
钢, 黑色粉末涂层 Steel, black powder coated	F-1642-120-40	F-1642-320-40
SUS304	F-1642-120-A1	F-1642-320-A1

材料 material	保持器零件号 Part number holder		
	隐藏式双孔 Hidden double hole	单孔挂钩式 Single hole hook type	外露式单孔单突缘 Exposed type single hole single protruding edge
钢镀锌 Steel galvanizing	1642-103-10	1642-105-10	1642-104-10
钢, 黑色粉末涂层 Steel, black powder coated	1642-103-40	1642-105-40	1642-104-40
SUS304	1642-103-A1	1642-105-A1	1642-104-A1

1. Material and surface treatment:  
Main body: SUS304 or Steel galvanizing or Steel, powder coated black

1. 材质及表面处理:  
主体: SUS304 或 钢镀锌 或 钢, 粉末涂层黑

如需获得产品 3D 模型图，请联系 WWW.FORND.COM